

LED LINEAR LIGHT

ITEM NO: LLS-W100 Series

INSTRUCTION OF LED LINEAR STRIP/LLS-W100

This product is mainly used for advertisement background, bridge, river bank, building frame and other large dynamic site. It can achieve splendid rainbow effects and sketch the outline of buildings, etc.

A. Specification

A-1. Structure:

Materials of Shell: Aluminun alloy +PC Cover
 Input Voltage: 110V/240V/277 AC
 Operating Voltage: 24V DC
 Protection Rating : IP65
 Operating Temperature: -20℃~45℃



LLS-W100

A-2. Model Configuration Table:

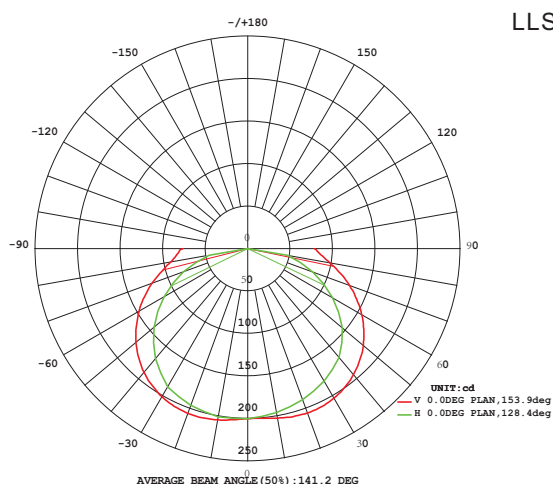
Model	LED Color	LED Quantity	Power consumption	Size	Weight	✓
LLS-W100-L3-DMX	RGBW	30	10 WATTS	L305*W100*H100mm	0.8kg±5%	
LLS-W100-L5-DMX	RGBW	48	17 WATTS	L500*W100*H100mm	1.35kg±5%	
LLS-W100-L6-DMX	RGBW	60	20 WATTS	L610*W100*H100mm	1.6kg±5%	
LLS-W100-L10-DMX	RGBW	96	34 WATTS	L1000*W100*H100mm	2.76kg±5%	
LLS-W100-L12-DMX	RGBW	120	40 WATTS	L1220*W100*H100mm	3.2kg±5%	

B. Working Mode

B-1. DMX System: International standard DMX512 signal.

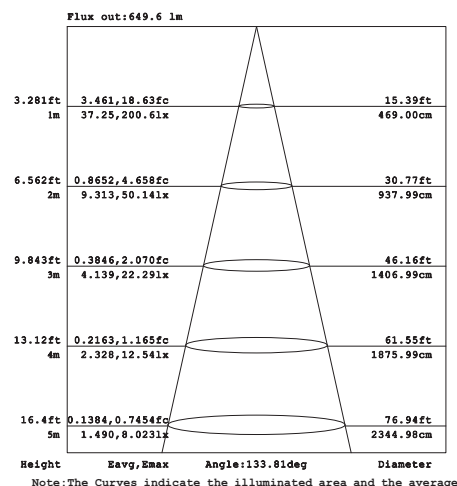
C. Photometrics

C-1. Distribution Curve



LLS-W100-L10

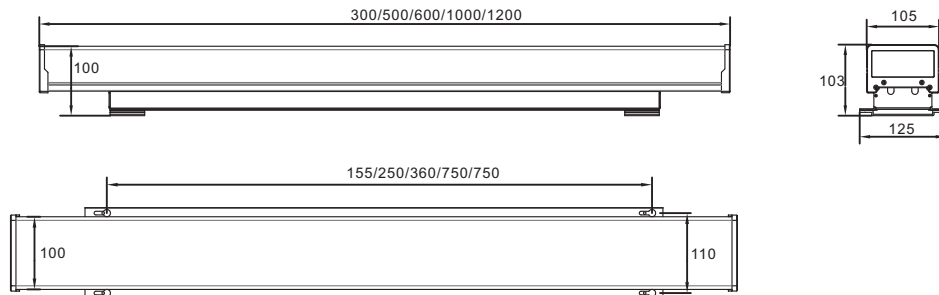
C-2. Illuminance at a distance



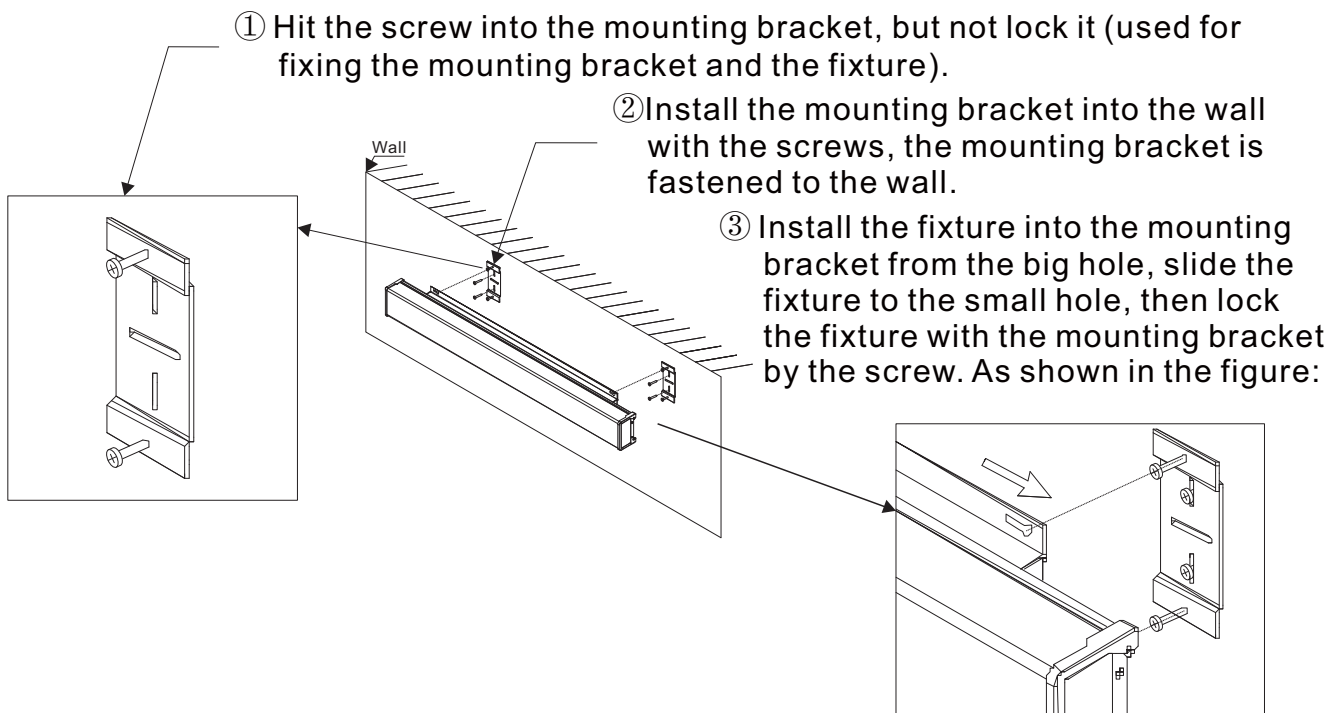
LED LINEAR LIGHT

ITEM NO: LLS-W100 Series

D. Dimension Drawing

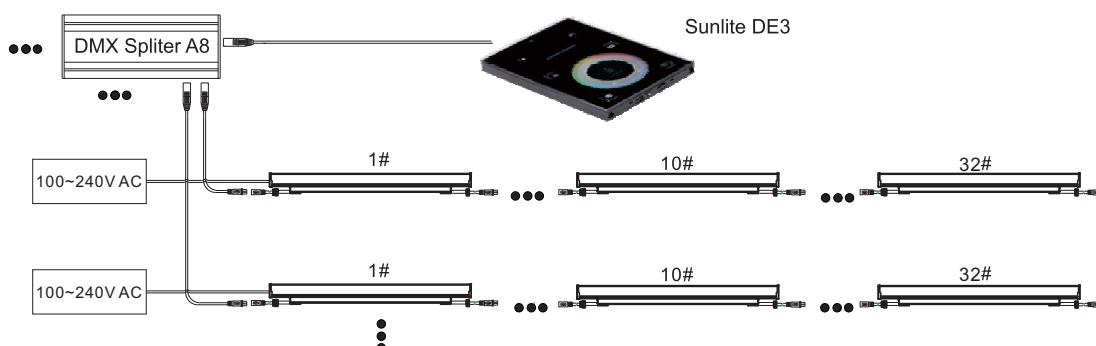


E. Installation



F. Connection

F-1: DMX control mode



LED LINEAR LIGHT

ITEM NO: LLS-W100 Series

Mode No.	Input Voltage	Power Connection Qty(Max.)	Signal Connection Qty(RGBW:8CH/M)	Signal Connection Qty(RGBW:4CH/FT)
LLS-W100-L3-DMX	277V AC	160PCS	/	128PCS
LLS-W100-L5-DMX	110V AC	40PCS	64PCS	/
LLS-W100-L5-DMX	220V AC	80PCS	64PCS	/
LLS-W100-L6-DMX	277V AC	80PCS	/	64PCS
LLS-W100-L10-DMX	110V AC	20PCS	32PCS	/
LLS-W100-L10-DMX	220V AC	40PCS	32PCS	/
LLS-W100-L12-DMX	277V AC	40PCS	/	32PCS

Caution:

1. Do not plug them into power when the product is still in package;
2. Don't use anything to cover the fixture during application;
3. Don't use this product in close environment;
4. If this product appears to be damaged, do not attempt any repair, please contact your dealer.

Warning:

* Pls twist the connector well in order to avoid water going inside and making fixture failure.

Note: The above instruction are subject to update or improve without notice. Pls turn to our staff for further details !
Thanks for your long term support !



Do not install the lamp in the lightning activity area.